



Integration with smart building management systems...

SPRVSR+ Graphical Monitoring and Management Software integration with Schneider Electric



For spaces containing various electronic and mechanical systems, such as complex living areas, airports, industrial facilities and shopping malls, the production of products that can work together within smart building technology allows for easy monitoring and control through central software systems.

The partnership between **Mavili** and **Schneider Electric**, a global leader in building management systems, provides a solution to the critical issue of ensuring life and property safety against fire in building management.

The devices belonging to Mavili's **Maxlogic & Mavigard** fire and gas detection and alarm systems have been added to Schneider Electric's building management software, **EcoStruxure**, under the system library as the "**Mavili Fire System**."

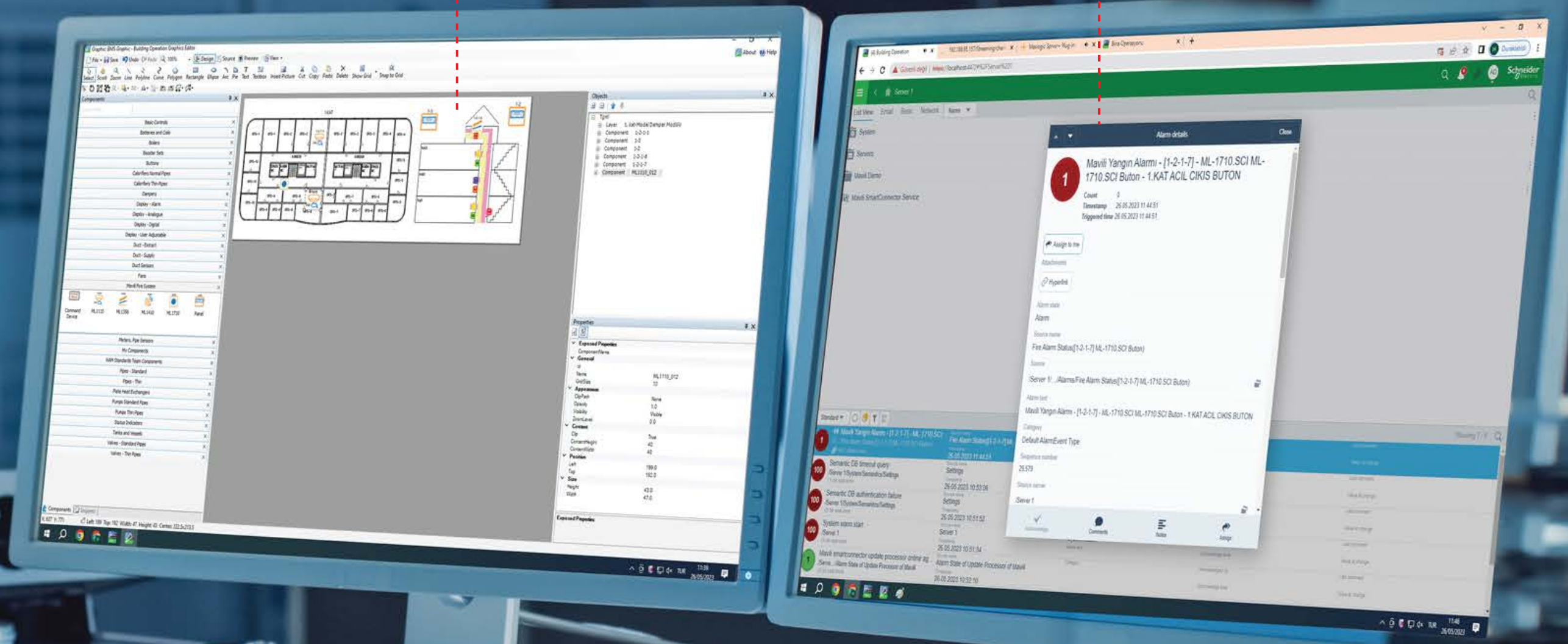
Mavili's monitoring and control software, **Maxlogic SPRVSR+ Plug-In**, integrated with **Schneider Electric's EcoStruxure** platform, allows fire and gas detection and alarm devices to be monitored and controlled via the web as well.

maxlogic & mavigard
fire and gas detection systems

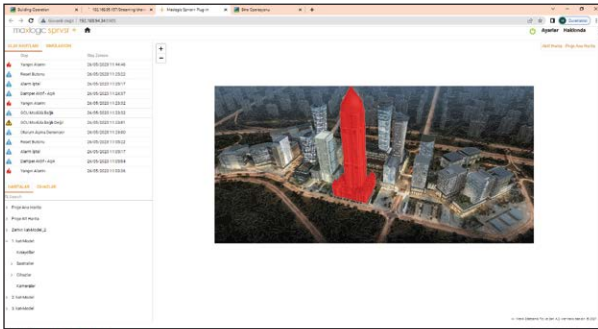
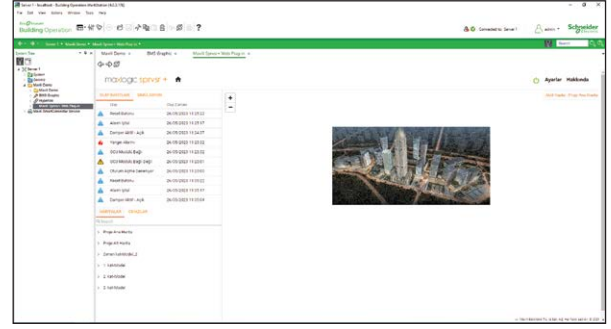
This integration is unique in that fire and gas detection and alarm devices can be positioned on maps using a user-friendly "drag-and-drop" method, and these devices can be matched with devices from other systems in the building as needed.

As a result of these processes, which can be quickly carried out from the "Designer" section, fire detection and alarm systems can be graphically displayed on floor plans, just like other low-current systems in the building, such as ventilation and lighting systems.

In the event of a fire alarm, the fire situation is displayed on the screen. Many details such as the time, date, and device of the fire alarm are shown in the event logs below.



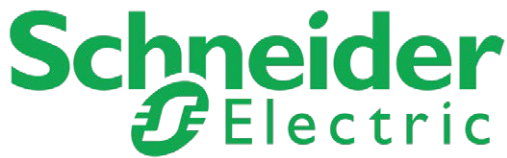
The **SPRVSR+** can be operated from both the library and as a separate plug-in tab. Thanks to the **SPRVSR+ Plug-In**, detailed maps and device information of the area to be monitored and controlled can easily be accessed.



In the event of a fire alarm, the fire situation is displayed on the screen.

If there is a camera paired with the detecting device, live camera footage of the area can be accessed by selecting "recheck." The device from which the fire alarm originated is also displayed on the map, and the functions of the **Alarm**, **Silence Alarm**, **Silence Buzzer**, and **Reset** buttons on the panel can be controlled remotely through the panel interface.

As a result of the collaboration between **Mavili** and **Schneider Electric**, with the EcoStruxure BMS software that integrates different systems, building management can be carried out without time loss, with precise control.



SOFTWARE MODELS

Product Code	Description
ML-1634.1	Maxlogic SPRVSR+ Graphic Monitoring and Control Android Software using cost, 1 user
ML-1634.5	Maxlogic SPRVSR+ Graphic Monitoring and Control Android Software using cost, 5 user
ML-1634.10	Maxlogic SPRVSR+ Graphic Monitoring and Control Android Software using cost, 10 user
ML-1635.1	Maxlogic SPRVSR+ Graphic Monitoring and Control IOS Software using cost, 1 user
ML-1635.5	Maxlogic SPRVSR+ Graphic Monitoring and Control IOS Software using cost, 5 user
ML-1635.10	Maxlogic SPRVSR+ Graphic Monitoring and Control IOS Software using cost, 10 user
ML-1636.15	Maxlogic SPRVSR+ Plug-In Graphical Monitoring Software Using Cost, Schneider EcoStruxure Integration

DONGLE MODELS

Product Code	Description
ML-1661.1	Maxlogic Sprvrs+ Master USB Dongle Using Cost
ML-1661.2	Maxlogic Sprvrs+ Slave USB Dongle Using Cost
ML-1661.3.15	Maxlogic SPRVSR+ Plug-In USB Dongle Using Cost, Schneider EcoStruxure Authorization

